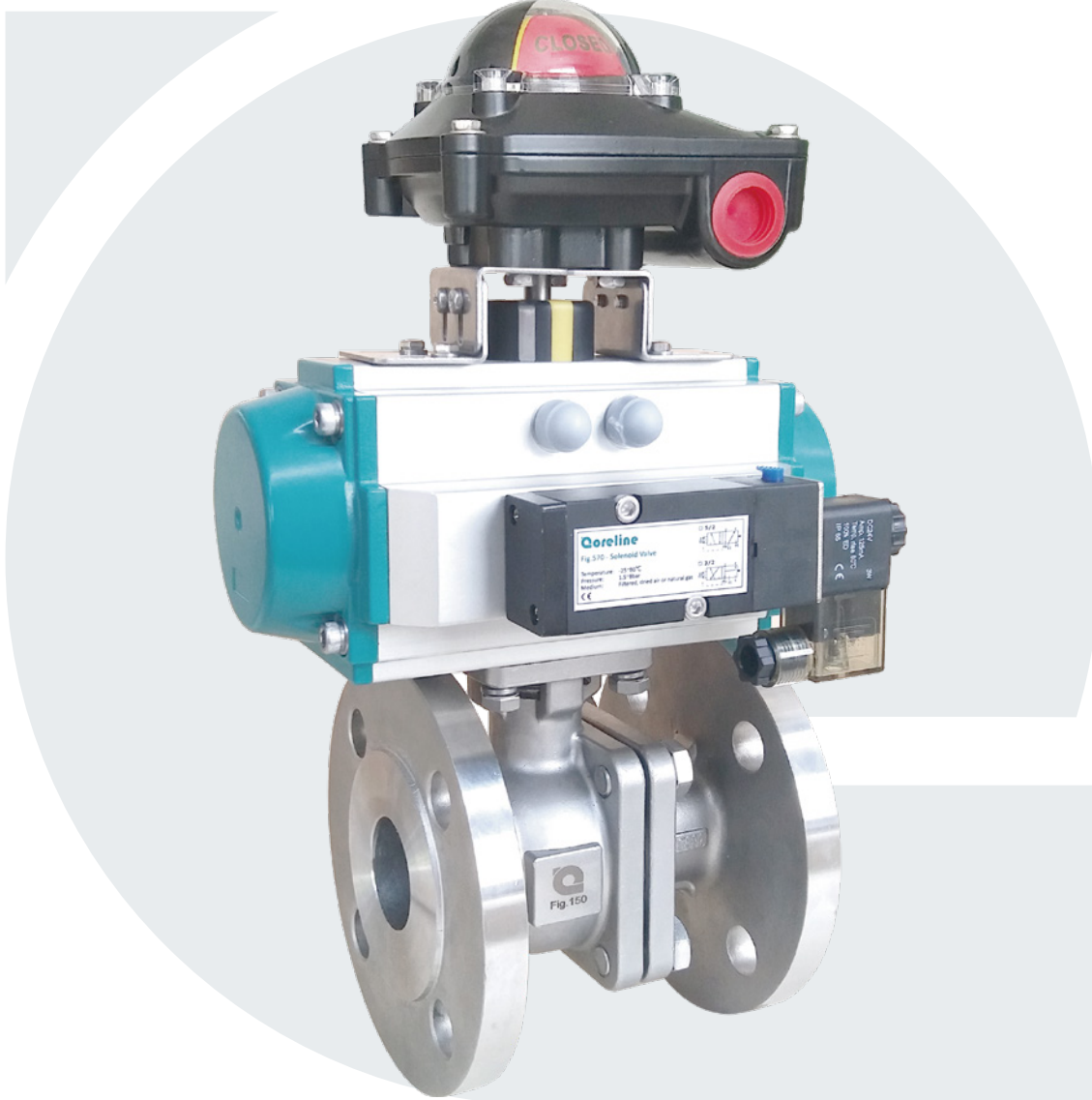
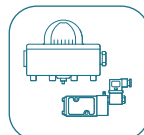
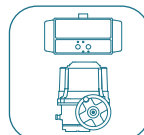
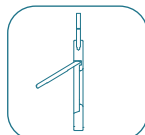
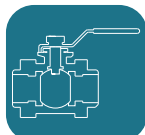
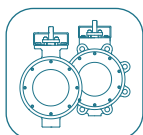
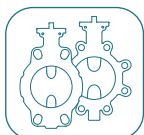


2PC Flanged ball valve

Fig.150



www.coreline.dk



Geeral information

Features

- Wax casting with excellent surface finish.
- Full bore for better Kv value.
- Anti-static devices for ball - stem - body.
- Blow-out proof stem.
- Pressure relief hole in ball slot.
- ISO5211 direct mounting pad for easy automation.
- Fire safe design.



Specifications

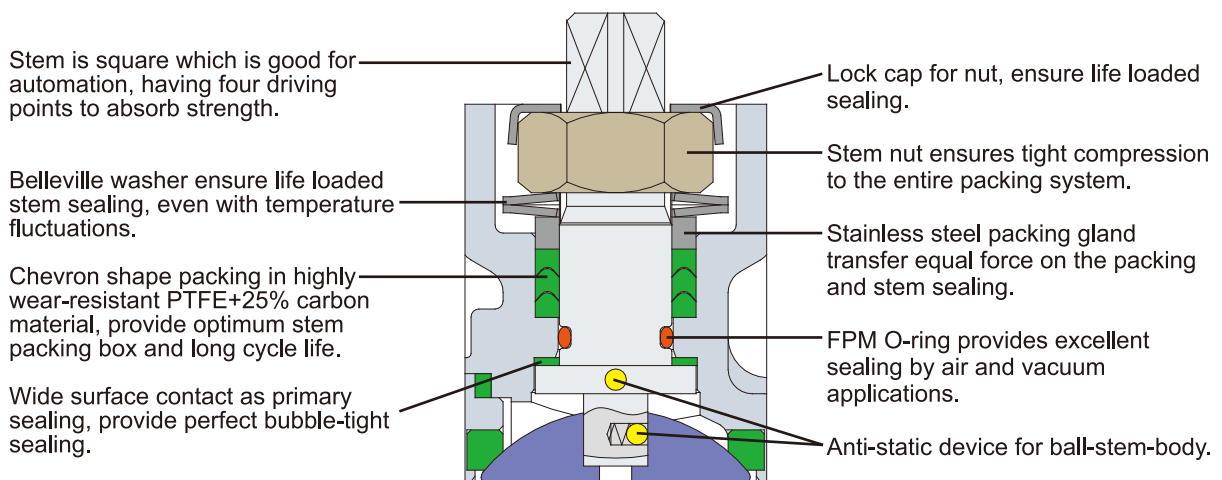
Connection:	Flanged ends according to DIN EN1092-1
Size range:	DN15-DN200
Pressure rating:	DN15-DN50: PN16/PN40 DN65-DN200: *) PN16
Face to face:	DN15-DN100: DIN3202 F4; DN125-DN200: DIN3202 F5 Or DN15-DN200: EN558 series 27
Body:	Carbon steel, stainless steel
Seat:	PTFE with 25% carbon, RPTFE, PTFE, TFM1600

*) Contact Coreline if you need higher working pressure PN40 for DN65-DN100.

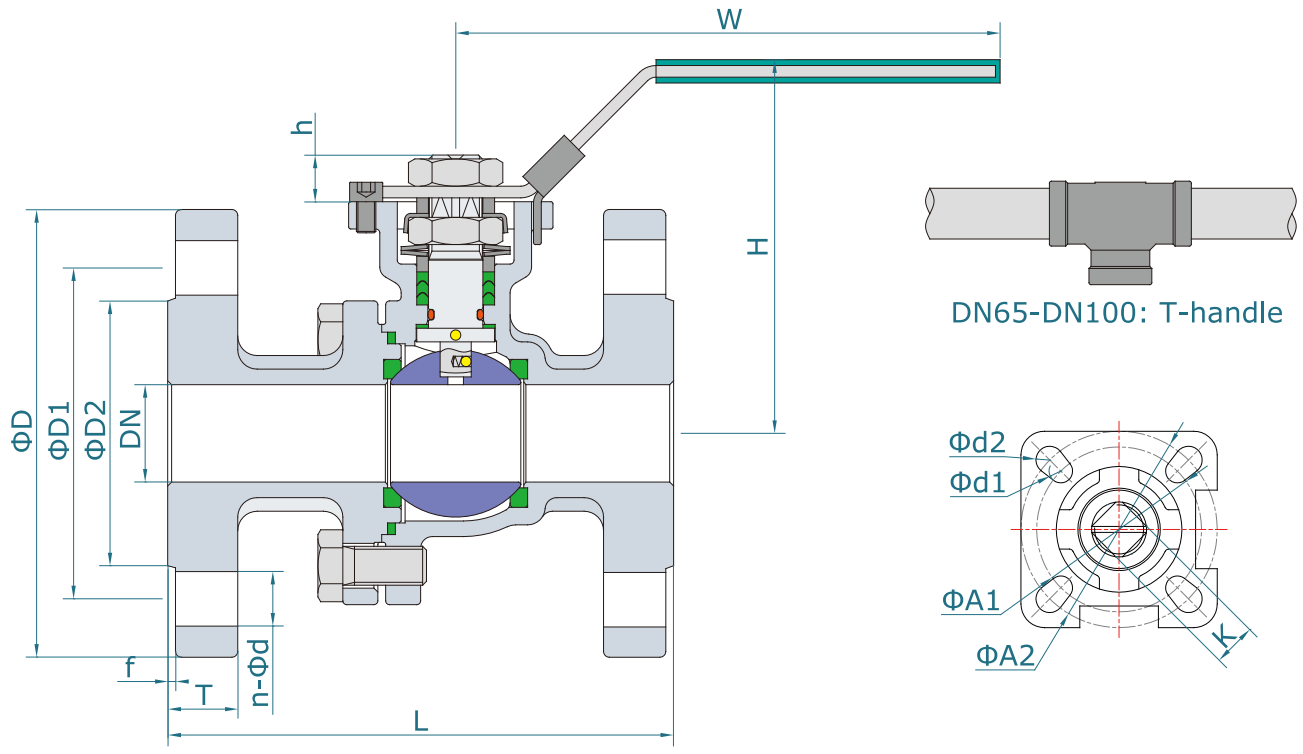


ATEX, CE, SIL and EU1935/2004 (European food approval) for Coreline ball valves.

Stem sealing system



Dimensions DN15-DN100



Dimensions - PN40/PN16

Size		Valve with handle								
INCH	DN	L ¹⁾	H	W	D	D1	D2	T	f	n-φd
1/2"	15	115	83	125	95	65	45	16	2	4-φ14
3/4"	20	120	89	125	105	75	58	18	2	4-φ14
1"	25	125	96	155	115	85	68	18	2	4-φ14
1 1/4"	32	130	108	155	140	100	78	18	2	4-φ18
1 1/2"	40	140	112	192	150	110	85	18	3	4-φ18
2"	50	150	120	192	165	125	102	20	3	4-φ18
2 1/2"	65	170	155	300	185	145	122	18	3	4-φ18
3"	80	180	182	300	200	160	138	20	3	8-φ18
4"	100	190	200	300	220	180	158	20	3	8-φ18

1) DN15-DN50: Face to face dimensions according to DIN3202-F4.

Please contact Coreline for other required standards.

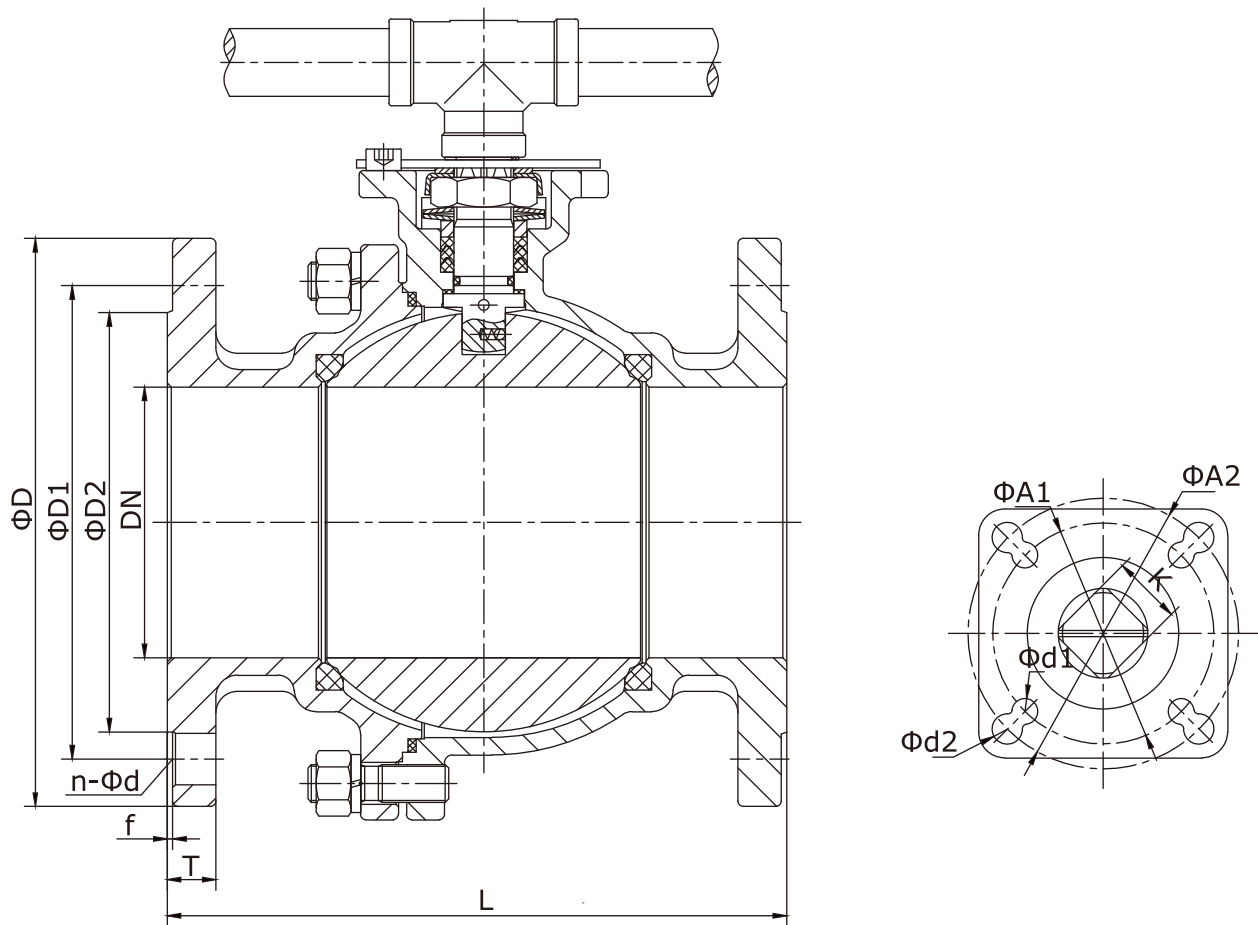
2) Other end flange standards available on request.

3) DN15-DN50: PN40/PN16; DN65-DN100: PN16.

Top flange connection

Size		Mounting flange						Stem	
INCH	DN	ISO5211	A2	d2	ISO5211	A1	d1	K	h
1/2"	15	F03	36	3	F04	42	3	9	10
3/4"	20	F03	36	3	F04	42	3	9	10
1"	25	F04	42	3	F05	50	3.5	11	12
1 1/4"	32	F04	42	3	F05	50	3.5	11	12
1 1/2"	40	F05	50	3.5	F07	70	4.5	14	15
2"	50	F05	50	3.5	F07	70	4.5	14	15
2 1/2"	65	F05	50	3.5	F07	70	4.5	14	15
3"	80	F07	70	4.5	F10	102	5.5	17	18
4"	100	F07	70	4.5	F10	102	5.5	17	18

Dimensions DN125-DN200



Dimensions - PN16

Size		Valve with handle						
INCH	DN	L ¹⁾	D	D1	D2	T	f	n- ϕ d
5"	125	325	250	210	188	22	3	8- ϕ 18
6"	150	350	285	240	212	22	3	8- ϕ 22
8"	200	400	340	295	268	24	3	12- ϕ 22

1) DN125-DN150: Face to face dimensions according to DIN3202-F5.

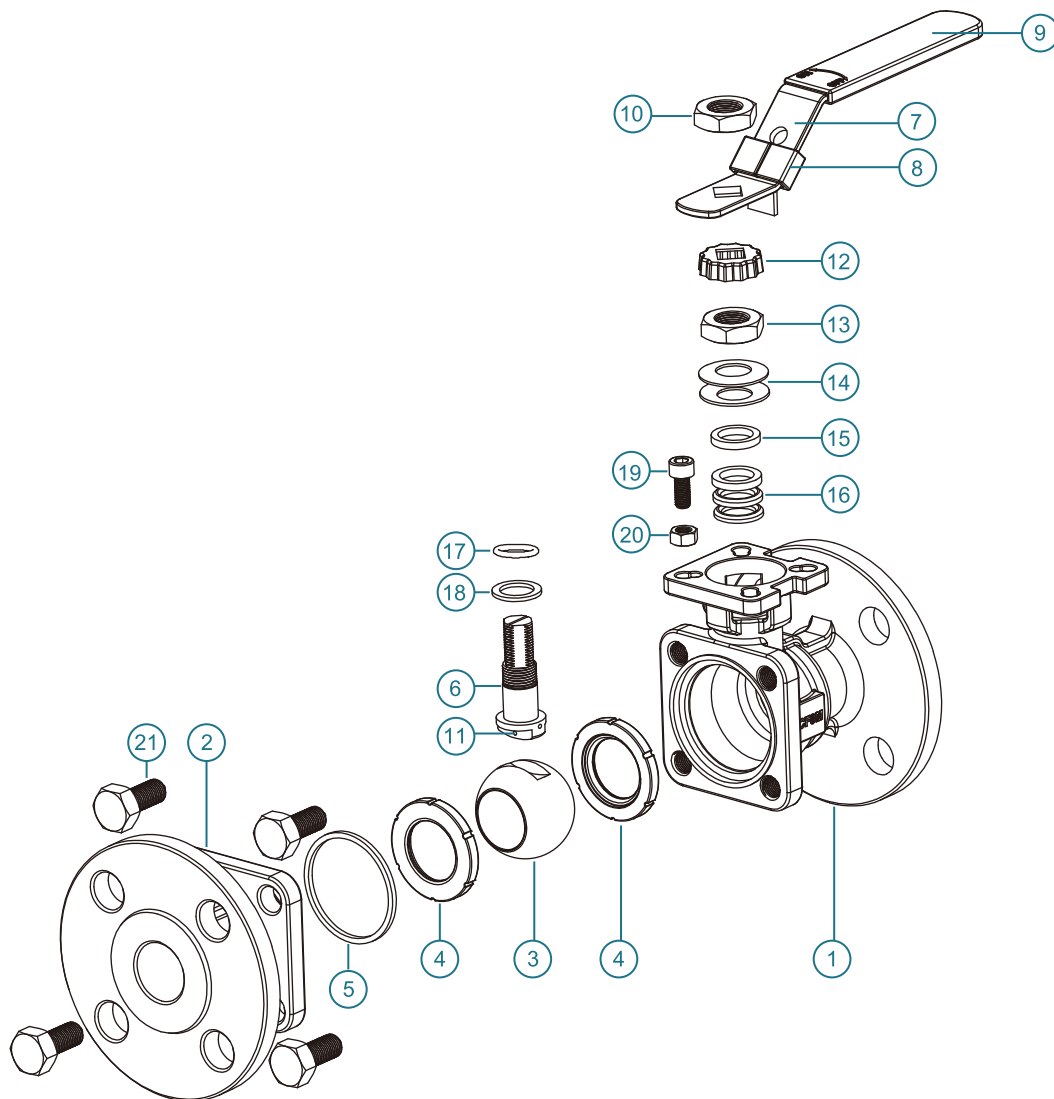
Please contact Coreline for other required standards.

2) Other end flange standards available on request.

Top flange connection

Size		Mounting flange						Stem	
INCH	DN	ISO5211	A2	d2	ISO5211	A1	d1	K	h
5"	125	F12	125	14	F10	102	12	22	23
6"	150	F12	125	14	F10	102	12	27	27
8"	200	F14	140	18	F12	125	14	27	27

Material part list DN15-DN100

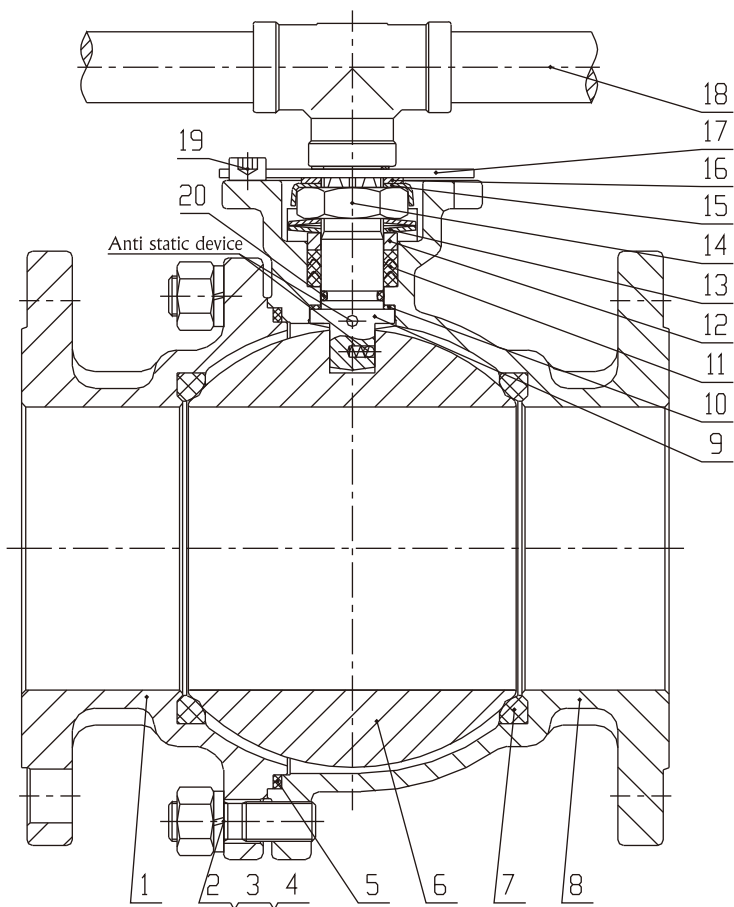


Material part list

No.	Part name	Material	No.	Part name	Material
1	Body	A351 CF8M	9	Handle sleeve	Vinyl
		A351 CF8	10	Nut	SS304
		A216 WCB	11	Anti-static device	SS316
2	Body cap	A351 CF8M	12	Lock cap	SS304
		A351 CF8	13	Nut	SS304
		A216 WCB	14	Belleville washer	SS301
3	Ball	SS316	15	Gland	SS304
		SS304	16	V-ring packing	1) PTFE+25% carbon
4	Seat	1) PTFE+25% carbon	17	O-ring	FPM
5	Gasket	1) PTFE+25% carbon	18	Stem sealing	PTFE
6	Stem	SS316	19	Stop bolt	SS304
		SS304	20	Nut	SS304
7	Handle	SS304	21	Body bolt	SS304
8	Locking device	SS304			

1) PTFE, RPTFE, TFM1600 material available on request.

Material part list DN125-DN200



Material part list

No.	Part name	Material	No.	Part name	Material
1	Cap	A351 CF8M	9	Stem	SS316
		A351 CF8			SS304
		A216 WCB			PTFE+25%C
2	Bolt	SS304	10	Stem sealing	PTFE
3	Washer	SS304			TFM1600
4	Nut	SS304			PTFE+25%C
5	Body gasket	PTFE+25%C	11	V-ring packing	PTFE
		PTFE			TFM1600
		TFM1600			
6	Ball	SS316	12	Packing gland	SS304
		SS304	13	Belleville washer	SS304
7	Seat	PTFE+25%C	14	Nut	SS304
		PTFE	15	Stop lock cap	SS304
		TFM1600	16	Washer	SS304
8	Body	A351 CF8M	17	Stopper	SS304
		A351 CF8	18	Handle	SS304
		A216 WCB	19	Stop bolt	SS304
			20	O-ring	FPM

Technical data

Technical data

Size		1) Torque - Valve	2) Kv - 90°	Weight - PN16
INCH	DN	[Nm]	[m³/h]	[kg]
1/2"	15	8	10	2.3
3/4"	20	8	27	3
1"	25	16	48	3.9
1 1/4"	32	26	70	5.6
1 1/2"	40	50	100	7
2"	50	55	205	9.5
2 1/2"	65	95	270	12
3"	80	104	495	18
4"	100	200	870	23.5

1) Torque value is based on PTFE+25% carbon seat and it includes 30% safety factor.

(Test: 0bar differential pressure, ambient temperature, non-lubricating).

2) Kv-value rated flow coefficients (m³/h at 1 bar ΔP).

Service factor [SF]	Multiply by	Medium factor [MF]	Multiply by
ON/OFF operation	1.00	Clean, particle free, non-lubricating (water, alcohol, etc)	1.00
Modulating operation	1.20	Clean, particle free, lubricating (oils, hydraulic fluid, etc)	0.80
Once per day operations	1.20	*) Slurries or heavily corroded, solvents and contaminated systems	2.00
Once every two days or a "Plant Critical" operation	1.50	Gas, saturated steam or superheated steam, clean	1.00~1.30

Sizing torque = Basic torque * [MF] * [SF]

*) Using ball valves in contaminated systems will reduce life time.

The flow coefficient - Kv can be calculated according to the below formula:

Liquid:

$$K_V = Q * \sqrt{\frac{W}{\Delta P}}$$

Gas:

$$K_V = \frac{V_N}{514} * \sqrt{\frac{G * T}{\Delta P * P_d}}$$

Kv: Flow coefficient

Q: Maximum flow volumn, m³/h

W: Exact weight, kg/m³

ΔP: Pressure loss, bar

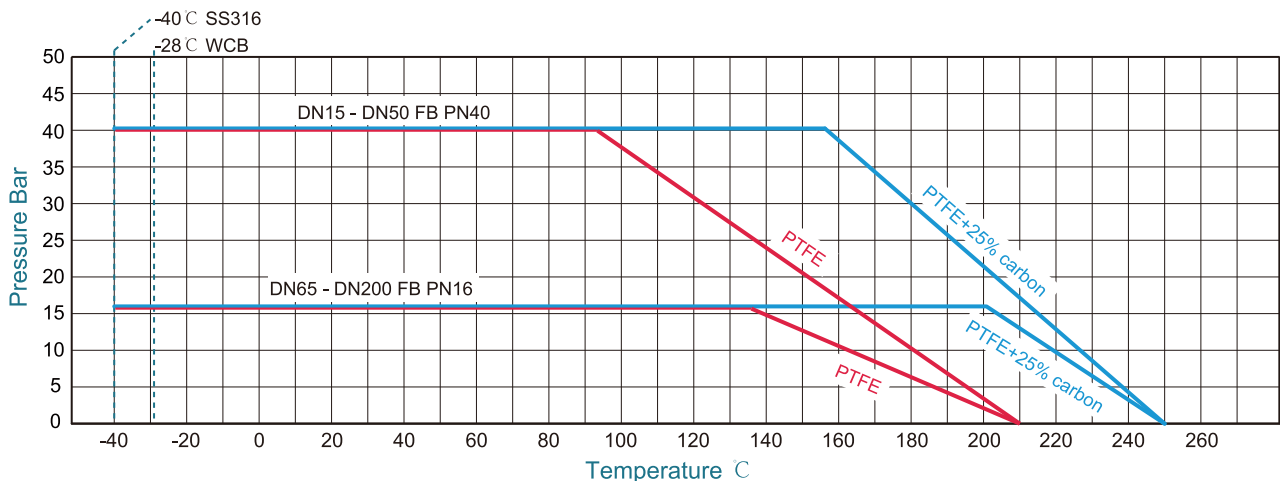
V_N: Maximum flow, Nm³/h

G: Exact weight, kg/Nm³

T: Absolute temperature, Kelvin

P_d: Absolute pressure downstream, bar

Pressure temperature curve (PTFE+25% carbon)



Actuators and accessories

Pneumatic actuators

CE Ex SIL



Type:	Fig.540 double acting, Fig.541 spring return
Torque:	Max.12992Nm
Operating medium:	Dry or lubricated air, inert/non-corrosive gases
Air supply pressure:	2.5bar-8bar
Travel stop:	0°- 90°, adjustable +4° to -4°
Mounting details:	ISO 5211, Namur, VDI/VDE 3845
Body material:	Hard anodized aluminum alloy

Electrical actuators

CE Ex



Type:	Fig.550 standard Fig.550S spring return type
Torque:	10Nm and up
Ambient temperature:	-25 C ~ +65 C
Function:	ON/OFF, Modulating
Body material:	Hard anodized aluminum alloy

Pneumatic accessories



Position switch box:	Fig.561/561M standard type Fig.560/560B/560C Explosion-proof type
Solenoid valve:	Fig.570 standard type Fig.576 Explosion-proof type
Positioner:	Fig.585 Intelligent EP type Fig.586 Electrical-Pneumatic type
Air regulator:	Air regulator Filter/Regulator-Lubricator (F.R.L) Filter-Regulator-Lubricator (F.R.L)
Pneumatic fittings:	Push-in fittings Silencers

Coreline

CORELINE LTD.

The contents of this catalogue are confidential and proprietary to Coreline, we reserve the right to change the specifications without any notice.

Add: No.4 Wangjiang Road, Muqiao Town, Zhengpugang New District, 238200 Hexian, Ma'anshan City, Anhui Province, China

Http: // www.coreline.dk

E-mail : mail@coreline.cn